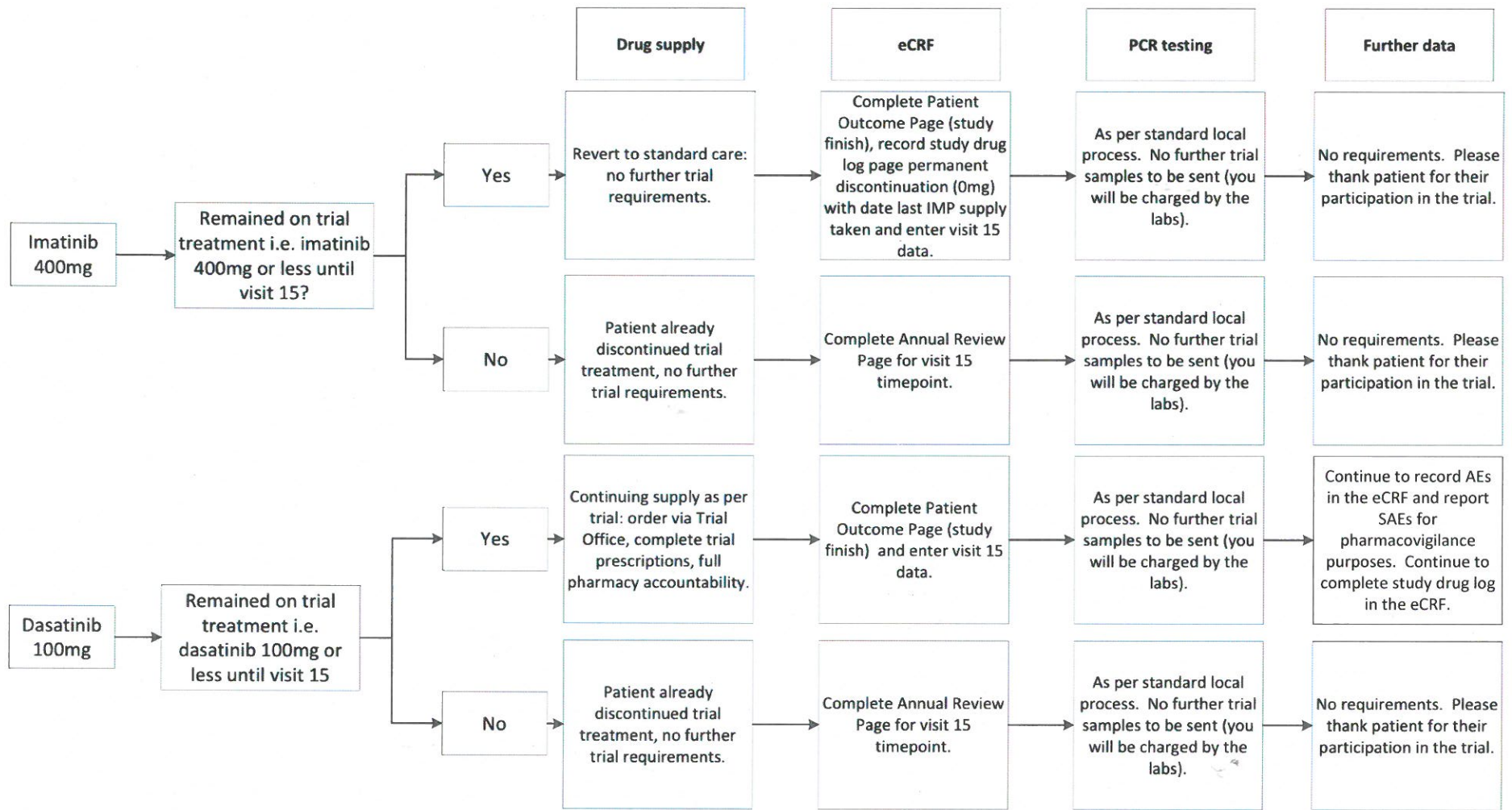


SPIRIT 2: End of trial schematic



For all patients: please ensure the eCRF is updated with any missing data, that AEs, study drug log and concurrent medication records are complete and up to date, and that all data queries have been resolved. Your Trial Manager would be very happy to advise – please see <http://www.spirit-cml.org/spirit-2-home/contact.aspx> for contact details.